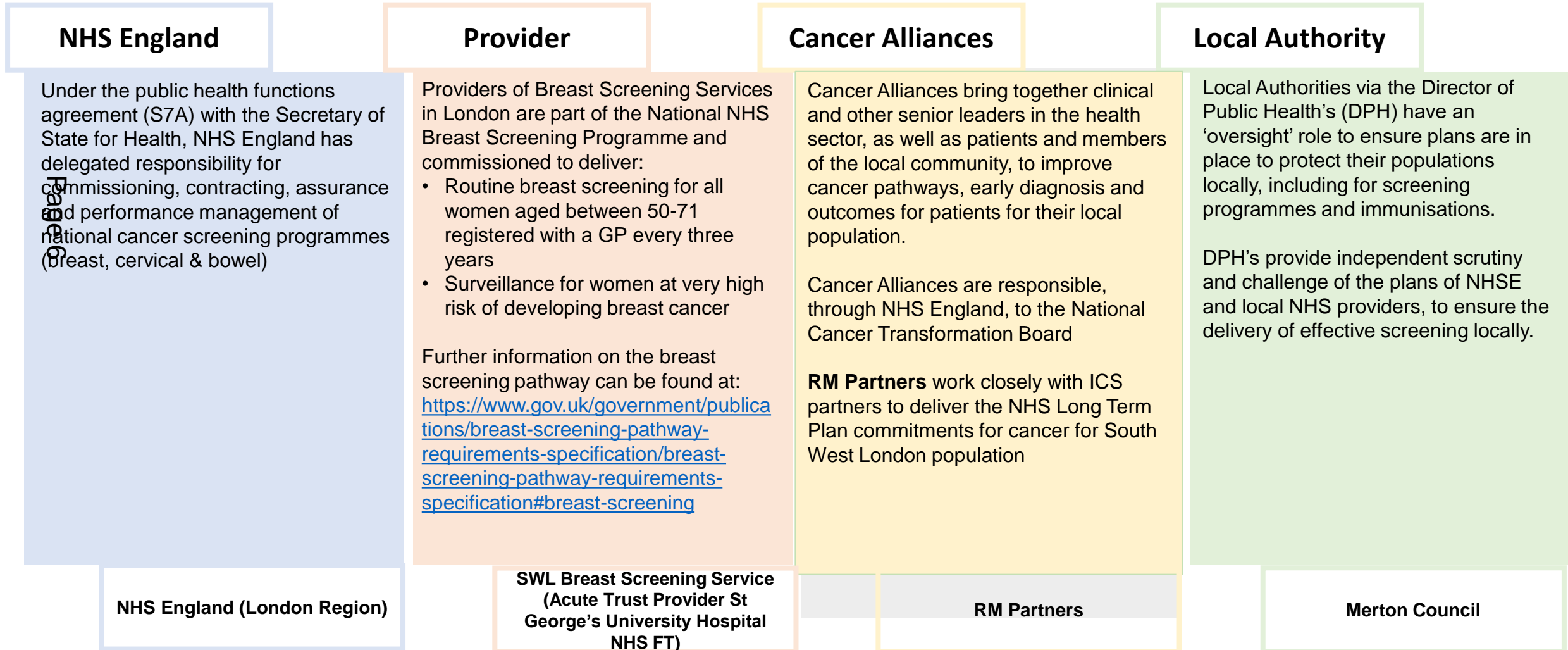


Breast Screening Recovery (BSR) Programme Merton Scrutiny Panel

Tuesday 14th March 2023

Roles and Responsibilities

The aim of the NHS Breast Screening Programme is to reduce mortality from breast cancer by diagnosing cancer at an early stage when treatment is more successful, leading to earlier detection, appropriate referral, and improved outcomes.



The NHS Breast Screening Programme provides free breast screening every three years for all women aged 50 and up to their 71st birthday.

Screening rates and the impact of the pandemic

- The pandemic has had a significant impact on breast screening services. It led to an initial pause in all routine screening between March and June 2020, except for very high-risk clients. The pandemic created notable capacity constraints for services due to infection control measures and workforce shortages and illnesses. It also led to a national change in the manner in which women were invited for screening, moving from issuing women with a specific time for their appointment (*timed appointment invitation model*) to requiring them to book an appointment (*open invitations*), which had a further detrimental impact for London.
- Prior to the pandemic, screening uptake (participation levels) and coverage (eligible women screened within three years) in London were 61% and 64% respectively. The latest monthly validated data (July 22) shows uptake at 51% and coverage at 52%.

- Breast screening backlog from the pandemic cleared
- More mammograms delivered in South West London (SWL) during 2022 compared with pre-pandemic activity levels (2019/20)
- Coverage and uptake rates across London's 33 boroughs are slowly recovering but remain 10% lower than England and below the national acceptable standard (70%)
- Although there are no breast screening sites (mobile or static) in the Merton area, Merton has better uptake and coverage rates across London (ranked 11 out of 33) compared to other boroughs **with** screening sites.
- All screening sites in SWL have returned to the timed appointment invitation model (since 20 February 2023) which will accelerate recovery of uptake rates.
- SWL achieved the 90% national standard in December 2022 (latest available data) to invite eligible women for a screen within 36 months of their last one (round length position)

Key updates from queries raised at Merton Scrutiny Panel held on 20 June 2022

The pandemic exacerbated deep-rooted historical issues leading to severe capacity constraints across services and a deterioration in coverage and uptake rates in London

London Breast Screening Serious Incident (SI) (February 2022)

Page 9

- The London Breast Screening SI Panel completed its investigation and a root cause analysis into the high number of calls not answered by the London Hub (January 22-March 22) and women unable to secure an appointment (July 21-May 22).
- A Final Report produced with 9 recommendations issued and an SI Action Plan developed. To date, 7 out of the 9 recommendations are implemented. SI formerly closed in August 2022.
- Issues regarding women who were contacting the hub and unable to secure an appointment have been resolved.
- Appointments are available within 4-6 weeks of an appointment letter received as per national guidance
- All women that could not get through to the Hub during the height of the SI (Jan – Feb 22) were identified, contacted and offered appointments as a matter of priority.

Increasing Screening Uptake and Reducing Inequalities

- A London-wide Breast Screening Health Inequalities Advisory Group established in response to deteriorating coverage and uptake rates
- The Group meets 6-weekly and membership of the Advisory Group includes stakeholders from London councils, cancer alliance, academics, analytics teams, commissioners, providers and public health consultants, to identify priorities and uptake work.
- NHSE London will be working with the Merton Public Health team to support development of an uptake improvement action plan for the residents of Merton.
- Merton Public Health are attending the new London Breast Screening Community of Practice, launched in Dec 2022

Breast Screening Site in Merton

- There is generally good coverage of static and mobile breast screening sites across London.
- Although Merton has no static or mobile sites, uptake and coverage rates fare better in Merton compared to other boroughs in London with screening sites
- Merton has 3 sites that are accessible by public transport (Surbiton Health Centre, Robin Hood Health Centre and St George's Hospital.
- Women can change appointment to a location of their choice if they wish
- We continue to explore a potential site in Merton

Breast cancer screening summary –uptake, coverage, inequalities & transformation uptake at London level



Key achievements (22/23)

- Return to timed appointment invitation model across London
- Dedicated programme of work established via a new BS focused multi-agency Health Inequalities Advisory Group with six priority areas of focus agreed for London
- Launch of London's Breast Screening Community of Practice (a multi-disciplinary, cross-sector community of breast screening practitioners and academics to discuss and spread best practice approaches and latest developments in breast screening)
- Funding secured to recruit health promotion posts at service level

Challenges & Risks

- Limited breast screening workforce: There is a national shortage of trained Mammographers/Radiographers, and support staff.
- Capacity challenges remain in some services
- Inflexibility of the National IT system for breast screening (breast screening has the most out-of-date system)
- Availability of granular inequalities breast screening data to inform & deploy targeted interventions and monitor uptake in targeted groups. Working with regional information team to identify an interim local solution.

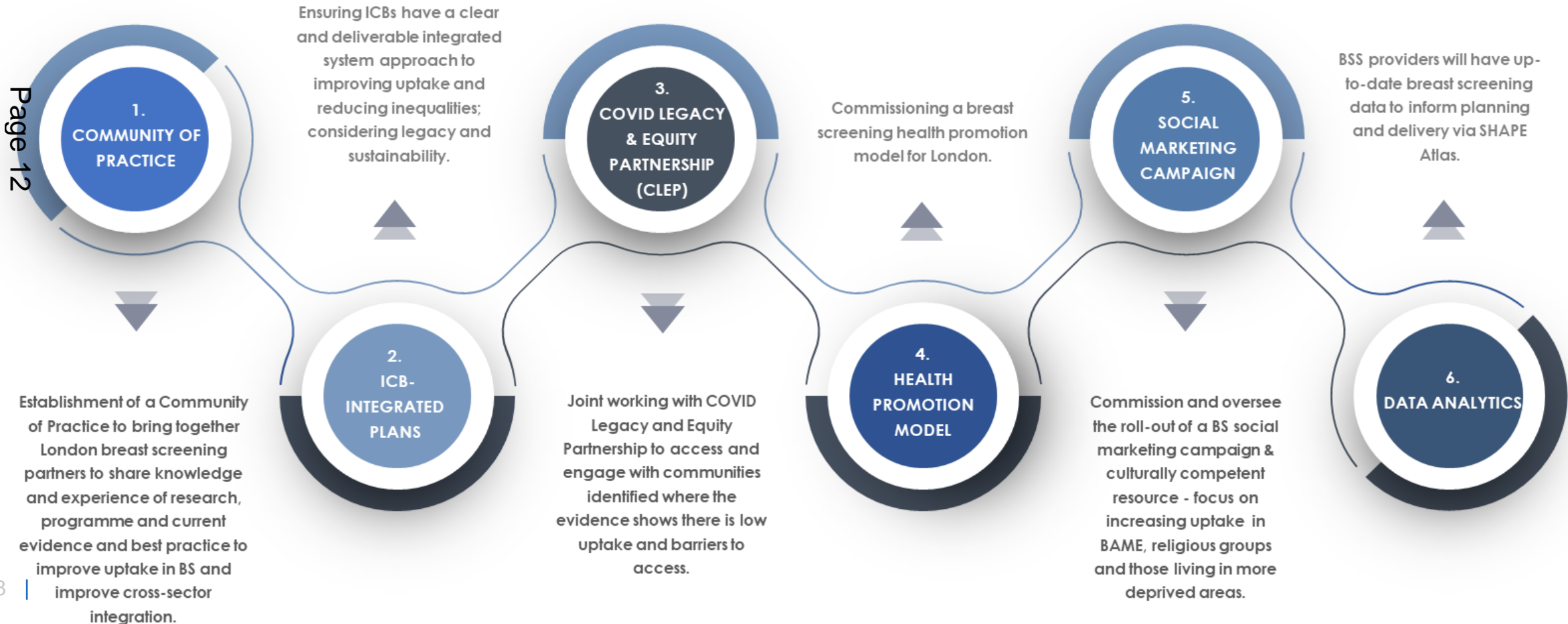
Continued work & priorities for 2023/24

- Maximising impact of interventions known to have a high impact on breast screening uptake rates (e.g. second timed appointments, text reminders, community link calls)
- Primary Care engagement
- Commissioning a breast screening health promotion model, including training and support to new staff in health promotion posts
- Multi-channel social marketing campaign planned for mid-2023 focusing on communities, low uptake boroughs and women who have never attended for a breast screen
- Improving equity of access: Web booking offer to women across London
- Focus on Serious Mental Illness (SMI) and Learning Disabilities groups
- Recruitment and retention of key staffing groups (e.g. mammographers, apprentices)

- London's uptake and coverage prior to the pandemic was already below the national average. Since the pandemic, breast screening uptake and coverage rates across London further deteriorated (due to a combination of capacity constraints in services, workforce shortages, impact of the SI, changes in patient behaviour during the pandemic (i.e. risk of exposure to Covid-19 in healthcare settings) and introduction of open invitations.
- Slides 23 and 24 highlight the inequalities between boroughs in London in terms of coverage and uptake rates. By London local authority and based on the latest available monthly validated data (July 22), Havering had the highest **uptake** (70.5%) and Westminster had the lowest (28.9%). Merton's uptake is at 54%. *Please note validated uptake and coverage data lags 6 months behind as women still have time to attend an appointment after 6 months of receiving their invitation letter.*
- Although decline in uptake and coverage rates has gradually stabilised across London (slides 19-22), the data highlights the scale of effort required across the London system to address the fundamental inequalities challenge. Recovery of uptake and coverage rates back to pre-covid levels is not acceptable and the level of ambition over the coming months will be greater to achieve equitable and accessible services for eligible women in London.
- Uptake and coverage rates for Merton remained static between October 2021-July 2022 during the height of the SI (see slides 25-28). Provisional data for the second half of 2022 indicate uptake rates in Merton are on an upward trend.

London Region: Health Inequalities – 6 priorities

NHSE formed an Health Inequalities Advisory Group a cross-sector, multi-disciplinary membership body, to help increase breast screening uptake and reduce health inequalities. The group has agreed six priority areas for London to improve screening participation levels and tackle health inequalities. System partners are working to progress these priority areas for the London population.



• Health Promotion Strategies in South west London Breast Screening

Ongoing health promotion

Education for each GP practice with a seminar once every screening round, updating staff on breast screening issues and recommending GP practice participation in encouraging attendance. Such as direct contact with non attenders, GP recommendation of breast screening and breast care information as an opportunistic activity during other appointments.

Developing a presence on social media with Facebook and Instagram accounts, some posts have had up to 10 000 views.

Stands at public places – eg Sainsbury's

Talks to women's groups – eg Baitul Futuh Mosque

Displays in community spaces – eg libraires and leisure centres

Providing education for colleagues working with women from the breast screening age group

Poster and literature development, commissioning photographs of women that represent the ethnic diversity of the region. Developing easy read letters and leaflets.

Looking at invitations to screening sites by bus routes and local transport.

Programme wide initiatives like the pre-invitation letter for first time invitees.



• Breast Screening and Tackling Health Inequalities



Page 14

• English not spoken at home

Insights from the vaccination uptake programme have shown us that there are barriers to taking up offered health care if you speak another language at home (regardless of how well you speak English)

We don't know why this is but wanted to tackle it.

Project to translate the invitation letters into the most commonly spoken languages in SW London and host them on the London Breast Screening Web Site. Invite letter will include a link to the translations.

Talking heads videos for Facebook page to deliver simple messages such as the benefits of early detection, screening is free and mammograms are carried out by women. Starring our multicultural staff who we discovered speak over 20 different languages.

• The LGBTQI+ community –Trans People

Publicising how breast screening can be accessed and who would benefit from breast screening.

Ensuring education of GP practices so that they can advise their patients appropriately and sensitively.

Promoting the Best for My Chest Campaign through the face book and Instagram pages and ensuring the associated video is available through the London website.

Providing training for breast screening staff to maximise ways for people from the LGBTQI+ community to feel safe and welcomed in breast screening spaces. Liaising with the trust LGBTQ network.

• Women who are homeless

Make connections with the local hospital based homelessness teams.

Make connections with local homelessness charities.

Develop flyer about screening for those who may be interested and for homelessness teams to have to hand for suitable clients.

Provide updates for those who work with homeless people who would be eligible for screening.

- Presentation title to be placed here
- St George's University Hospitals NHS Foundation Trust

Breast Screening and Tackling Health Inequalities cont.

• Women with a physical disability

Purchase specialist chairs for each site so that women with limited mobility can be seated while having a mammogram.

Provide an advice service so women with a physical disability can discuss whether it will be possible to have a mammogram. Physical assessment to be available on request.

Provide lead aprons at all sites so women can be supported by a carer as a reasonable adjustment.

Develop a talking head video featuring a woman with a physical disability, discussing that if you are a wheelchair user it is still possible to have a mammogram.

Use the trust based disability network to provide training for staff

- Presentation title to be placed here
- St George's University Hospitals NHS Foundation Trust

• Women with a learning disability

Carrying out an audit to ensure all women of screening age on a GP practice LD register are also captured by the breast screening programme.

Delivering teaching session for carers of women with a learning disability, focusing on specialist care homes to ensure they are able to advocate for the women they look after and encourage screening.

Investing in lead aprons at every screening site so that women can have a carer in the room during their procedure as a reasonable adjustment.

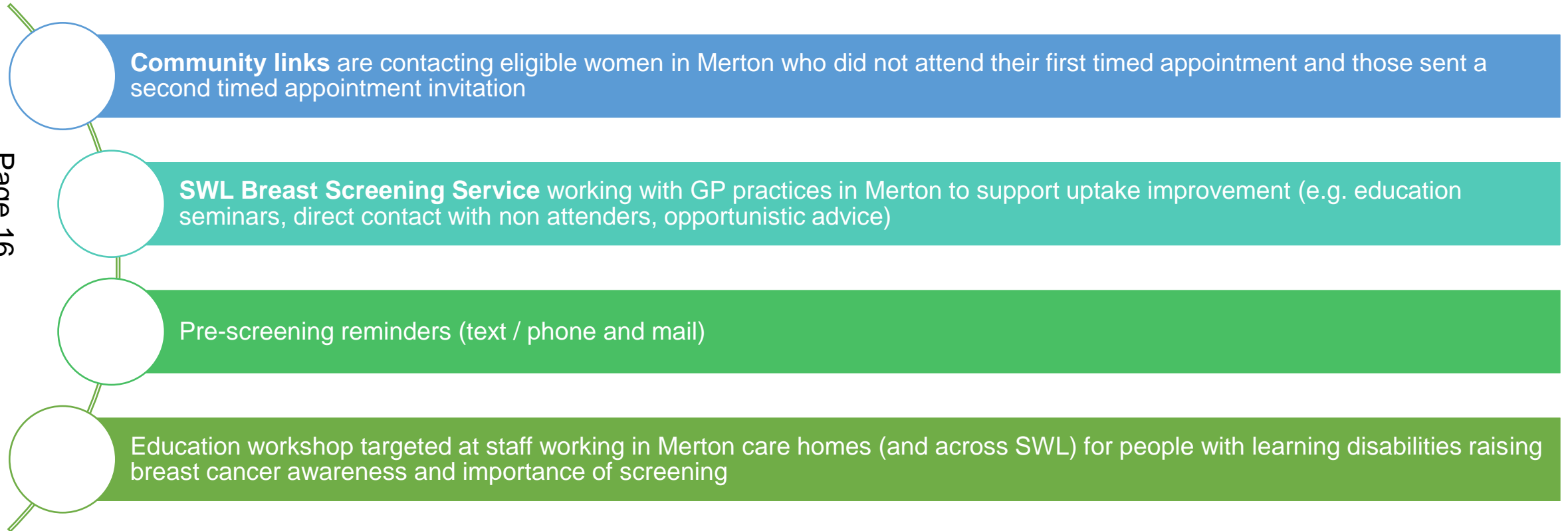
Sourcing easy read leaflets and letters and ensuring they are available on the website and used for assessment clinic appointments,

Publicising the video about women with learning disabilities and breast screening developed by colleagues in Bath.

Following up individual women with an LD who have attended but not completed screening.
Auditing women with LD who have never been screened to see if any reasonable adjustments might make a difference.



SWL: Breast Screening uptake improvement interventions at place-based level (Merton)



How we can better work with the Council and health partners locally?

- Shaping the London-wide Breast Screening Social Marketing Campaign
- Help identifying initiatives and knowledge sharing in Merton to maximise opportunities for making every contact at place-based level
- Agreeing future areas of work with Merton Partners (including SWL breast screening service, ICB and Council outreach team) to support improvements in uptake (e.g. close working with Merton to deliver targeted outreach/engagement activities)
- Establishing closer working with Local Authority Health Promotion teams/Community Champions.
- Workforce development of local health promotion staff (and community champions) to support breast screening uptake improvement work
- Raising awareness and importance of breast screening in local communities

The ask of OSC Members

- Raising awareness and importance of breast screening in local communities
- Fostering of links with faith leaders and community groups (and community champions), and relevant voluntary, community and social enterprise organisations to work with NHS

Appendices

Background

- Screening aims to find breast cancers early, when they have the best chance of being cured.
- Breast screening uses a test called mammography which involves taking x-rays of the breasts. Screening can help to find breast cancers early, when they are too small to see or feel. These tiny breast cancers are usually easier to treat than larger ones. If the mammogram identifies any abnormalities, the woman will be invited for further investigation (e.g. ultrasound and biopsy) Overall, the breast screening programme finds cancer in about 8 out of every 1,000 women having screening.

Women need to be registered with a GP to receive the invitations.

Page 19

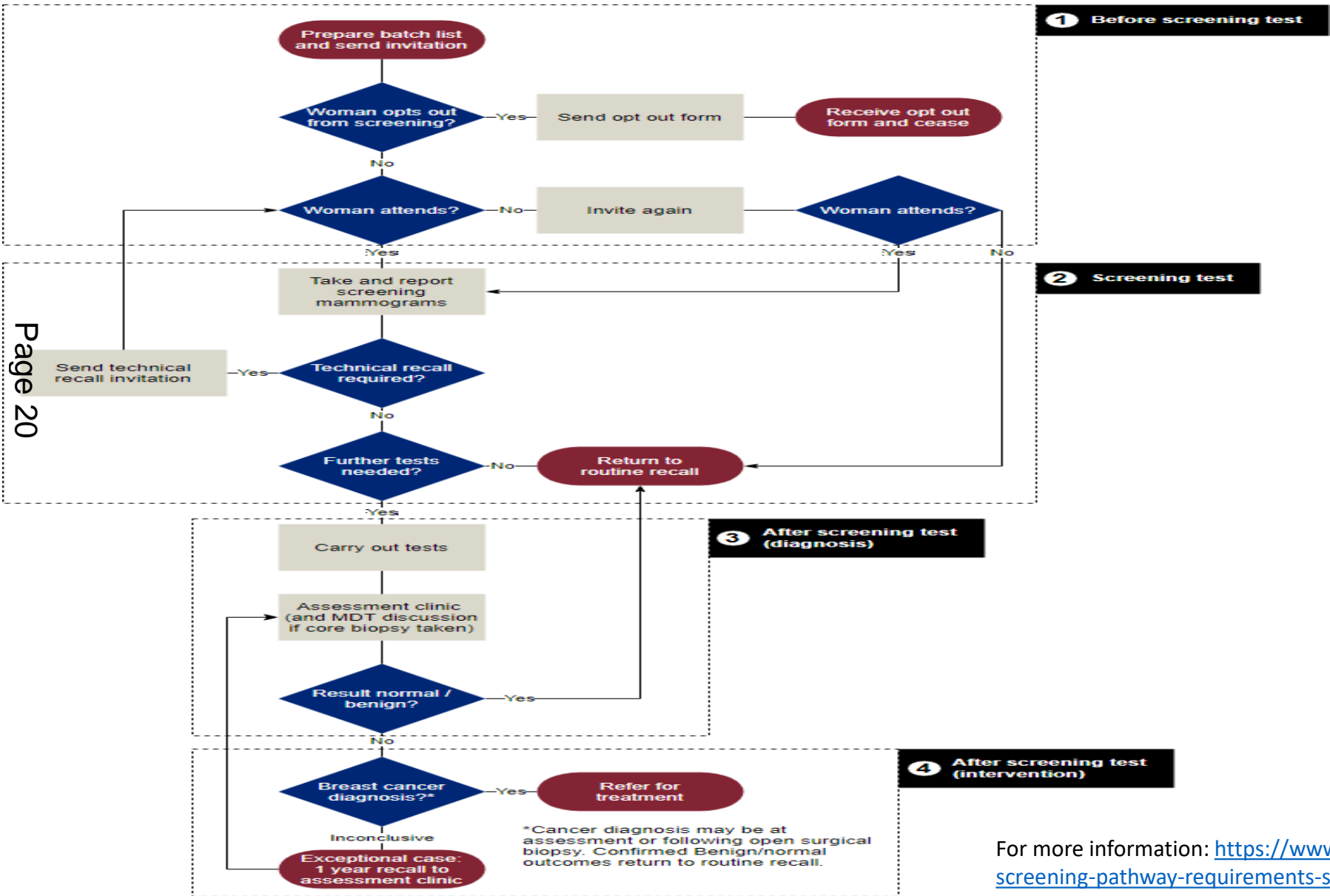
How Breast Screening works?

The NHS Breast Screening Programme provides free breast screening **every three years** for all women aged 50 and up to their 71st birthday. Because the Programme is a rolling one which invites women by date of birth and last screening result (if previously screened), not every woman receives an invitation as soon as she turns 50. But she will receive her first invitation before her 53rd birthday. Once women reach, 70, which is the upper age limit for routine invitations for breast screening, they are encouraged to make their own appointments.

Breast Screening Providers in SWL

- There are a total of **seven locations across SWL** which deliver breast screening: Edridge Road Community Health Centre (Croydon), Purley War Memorial Hospital (Purley), Queen Mary Hospital (Roehampton), Rose Centre, St George's Hospital (Tooting), Surbiton Health Centre (Surbiton), Robin Hold Lane Health Centre (Sutton) and Teddington Memorial Hospital (Teddington). There are currently no mobile units operating within South West London

Current Breast Screening Pathway



Page 20

For more information: <https://www.gov.uk/government/publications/breast-screening-pathway-requirements-specification/breast-screening-pathway-requirements-specification>

Breast Screening Recovery: South West London Programme update



Approach to monitoring restoration	<i>London status update (data source: National Breast Screening Recovery dashboard extracted 08/02/2023)</i>
<p style="writing-mode: vertical-rl; transform: rotate(180deg);">Page 21</p> <p>NHS Breast Screening Restoration approach, KPIs</p> <p>1. Restoring the adjusted backlog</p>	<p>Since October 2020, tier 5 (these are delayed women who should have been screened and have not yet begun the process of being invited) numbers for London have significantly reduced from 146,875 women to 11,060 women in February 2023.</p> <ul style="list-style-type: none"> For SWLBSS tier 5 numbers based on the February 2023 position is zero (compared with the peak number of 32,657 in mid-Oct 2020) <p>The adjusted backlog is defined as Tier 5 women (yet to be invited) + delayed Tier 4 women (invited but not screened). The Tier 4 figure is adjusted to take into account women that would normally be in Tier 4 during BAU.</p> <ul style="list-style-type: none"> SWLBSS has only 159 women in its adjusted backlog (compared to the peak in March 2021 of 29,060)
<p>2. Invite 90% of women for a screen within 36 months of their last one</p>	<p>This is a lagging indicator but round length has slowly been trending upwards since October 2021 up to 74% in October 22, falling recently as services return to timed appointments and prioritise uptake over round length .</p> <p>At December 22:</p> <ul style="list-style-type: none"> SWLBSS was showing 95% of women in SWL were invited for a screen at 36 months, meeting the national achievable performance standard
<p>3. Screening Uptake</p>	<p>The latest monthly validated data from June 22 shows National uptake at 63%, London at 51% and SWLBSS at 55%.</p>

Key Headlines

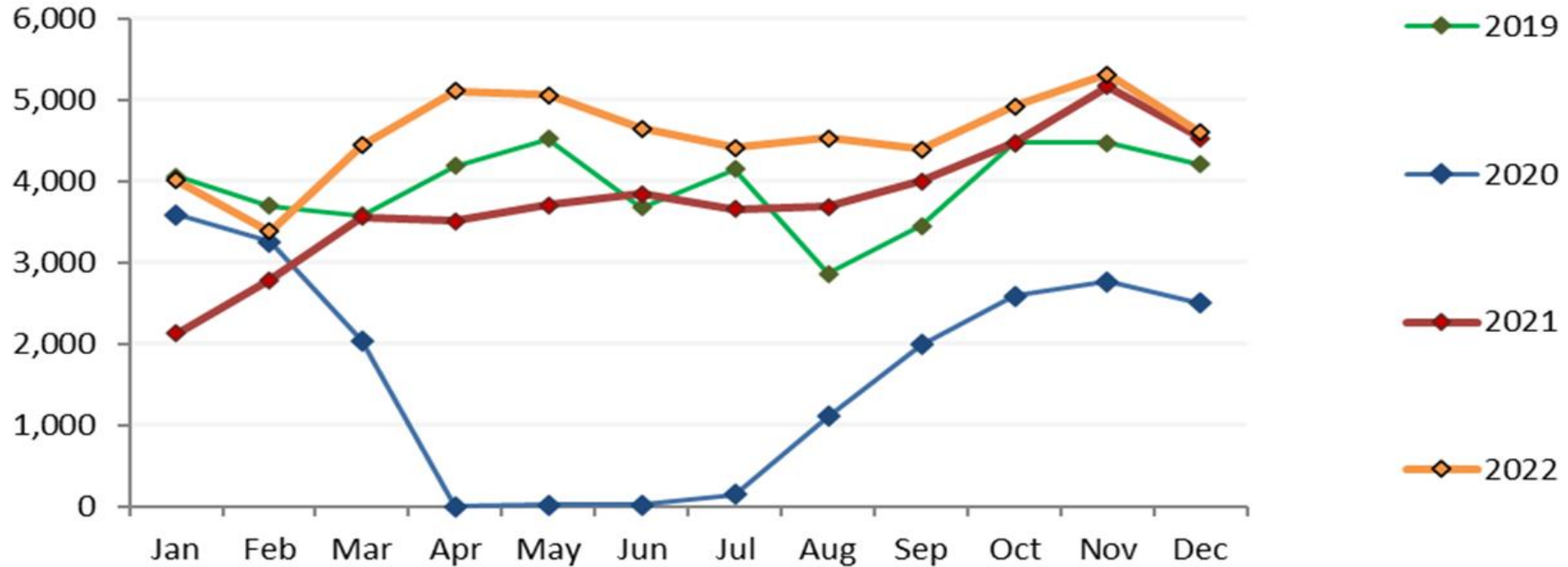
- SWLBSS has recovered its screening backlog that resulted from COVID-19 and has achieved the 90% national standard in December 2022 to invite eligible women for a screen within 36 months of their last one (round length position) based on latest data.
- As a result of the decision by the Breast Screening Improvement Board to transition back to timed appointments from open invitations for all services, SWLBSS returned all its sites back to the timed appointment model of invitation as the primary method of invitation.

Screening attendances in South West London have been higher than previous years and pre-Covid period (2019/20)

Source: NHS Futures

Screening attendances: London - South West London BSS

Source: BS8 denominator

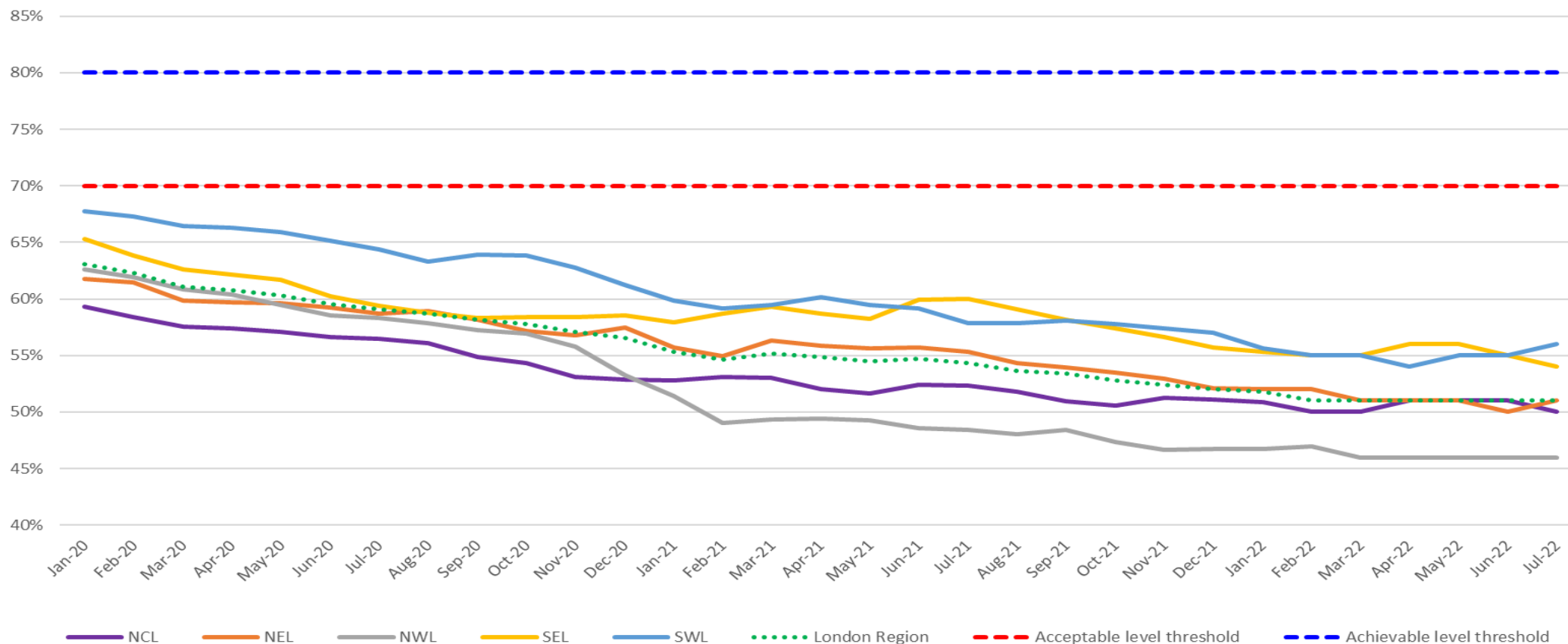


Breast Screening Uptake at ICB level

Uptake across London is considerably below the national standard of 80% and reduced further following the introduction of Open Invitations in London in September 2020

Source: NHS Futures

Breast Screening Uptake (50-70) by ICB



Breast Screening uptake at ICB level

Source: NHS Futures



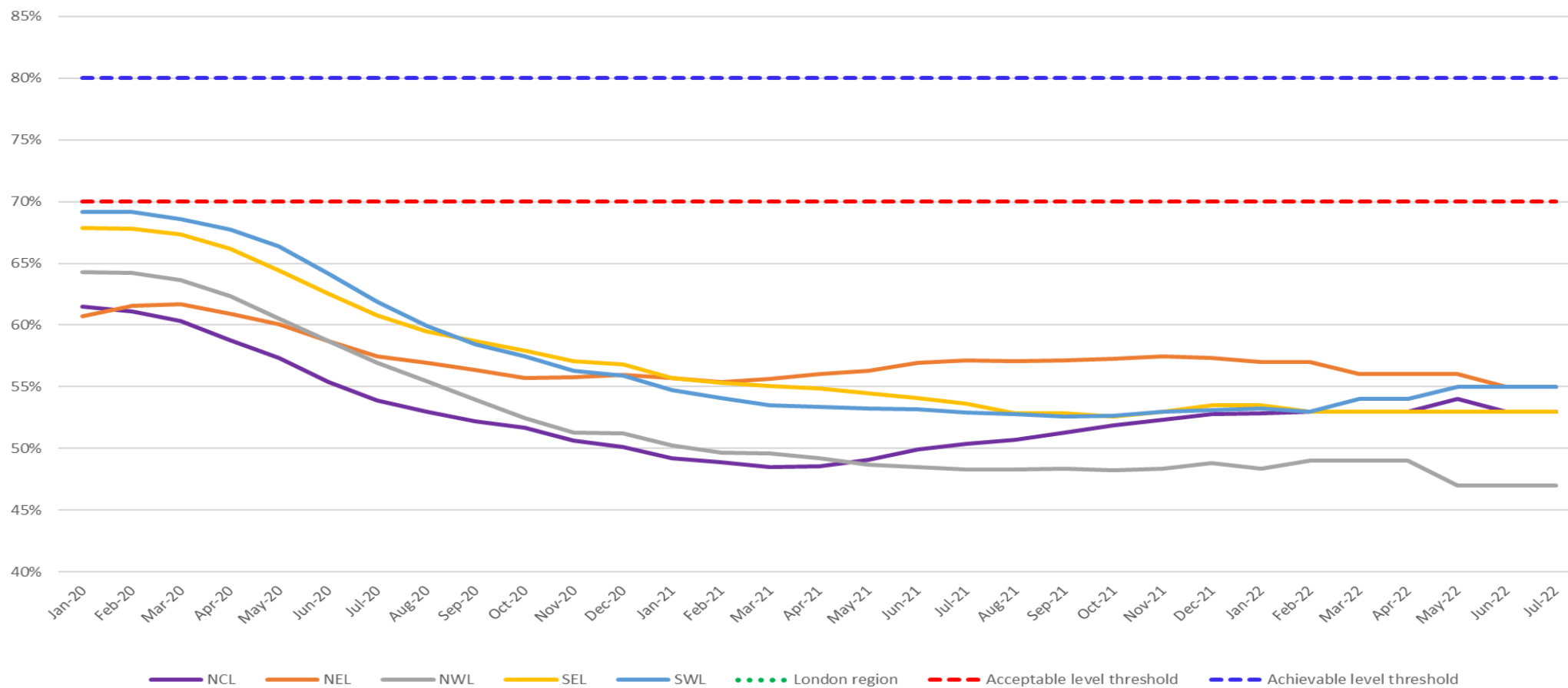
ICB/ Region	Jan-20	Feb-20	Mar-20	Apr-20	May-20	Jun-20	Jul-20	Aug-20	Sep-20	Oct-20	Nov-20	Dec-20	Jan-21	Feb-21	Mar-21	Apr-21	May-21	Jun-21	Jul-21	Aug-21	Sep-21	Oct-21	Nov-21	Dec-21	Jan-22	Feb-22	Mar-22	Apr-22	May-22	Jun-22	Jul-22
North Central London	59%	58%	58%	57%	57%	57%	56%	56%	55%	54%	53%	53%	53%	53%	53%	52%	52%	52%	52%	52%	51%	51%	51%	51%	51%	50%	50%	51%	51%	51%	50%
North East London	62%	62%	60%	60%	60%	59%	59%	59%	58%	57%	57%	57%	56%	55%	56%	56%	56%	56%	55%	54%	54%	54%	53%	52%	52%	52%	51%	51%	51%	50%	51%
North West London	63%	62%	61%	60%	59%	59%	58%	58%	57%	57%	56%	53%	51%	49%	49%	49%	49%	49%	48%	48%	48%	47%	47%	47%	47%	47%	47%	46%	46%	46%	46%
South East London	65%	64%	63%	62%	62%	60%	59%	59%	58%	58%	58%	59%	58%	59%	59%	59%	58%	60%	60%	59%	58%	57%	57%	56%	55%	55%	55%	56%	56%	55%	54%
South West London	68%	67%	66%	66%	66%	65%	64%	63%	64%	64%	63%	61%	60%	59%	59%	60%	59%	59%	58%	58%	58%	58%	57%	57%	56%	55%	55%	54%	55%	55%	56%
London region	63%	62%	61%	61%	60%	60%	59%	59%	58%	58%	57%	57%	55%	55%	55%	55%	55%	55%	54%	54%	53%	53%	52%	52%	52%	51%	51%	51%	51%	51%	

Breast Screening Coverage at ICB level

Coverage has similarly declined over the same period.

Source: NHS Futures

Breast Screening Coverage (50 - 70) by ICB



Breast Screening Coverage at ICB level

Source: NHS Futures



ICB/ Region	Jan-20	Feb-20	Mar-20	Apr-20	May-20	Jun-20	Jul-20	Aug-20	Sep-20	Oct-20	Nov-20	Dec-20	Jan-21	Feb-21	Mar-21	Apr-21	May-21	Jun-21	Jul-21	Aug-21	Sep-21	Oct-21	Nov-21	Dec-21	Jan-22	Feb-22	Mar-22	Apr-22	May-22	Jun-22	Jul-22	
North Central London	61%	61%	60%	59%	57%	55%	54%	53%	52%	52%	51%	50%	49%	49%	48%	49%	49%	50%	50%	51%	51%	52%	52%	53%	53%	53%	53%	53%	54%	53%	53%	
North East London	61%	62%	62%	61%	60%	59%	57%	57%	56%	56%	56%	56%	56%	55%	56%	56%	56%	57%	57%	57%	57%	57%	57%	57%	57%	57%	57%	56%	56%	56%	55%	55%
North West London	64%	64%	64%	62%	61%	59%	57%	55%	54%	52%	51%	51%	50%	50%	50%	49%	49%	49%	48%	48%	48%	48%	48%	49%	48%	49%	49%	49%	47%	47%	47%	
South East London	68%	68%	67%	66%	64%	63%	61%	59%	59%	58%	57%	57%	56%	55%	55%	55%	54%	54%	54%	53%	53%	53%	53%	53%	54%	53%	53%	53%	53%	53%	53%	
South West London	69%	69%	69%	68%	66%	64%	62%	60%	58%	57%	56%	56%	55%	54%	54%	53%	53%	53%	53%	53%	53%	53%	53%	53%	53%	53%	53%	54%	54%	55%	55%	55%
London region	65%	65%	64%	63%	62%	60%	58%	57%	56%	55%	54%	54%	53%	53%	52%	52%	52%	52%	52%	52%	52%	52%	52%	53%	53%	53%	53%	53%	54%	53%	52%	52%

Breast Screening uptake at London Borough level



LTLA	Dec-21	Jan-22	Feb-22	Mar-22	Apr-22	May-22	Jun-22
1 Havering	67.6%	68.4%	68.2%	69.0%	69.3%	69.1%	70.5%
2 Bromley	67.7%	66.3%	66.1%	66.6%	67.6%	67.7%	66.2%
3 Bexley	67.2%	65.7%	64.0%	63.5%	64.6%	65.1%	62.4%
4 Sutton	61.6%	61.0%	61.4%	60.4%	58.9%	59.6%	60.7%
5 Harrow	59.7%	59.9%	62.1%	62.9%	62.4%	60.6%	59.7%
6 Kingston upon Thames	60.4%	59.3%	59.5%	60.1%	60.4%	59.9%	59.2%
7 Richmond upon Thames	57.9%	57.7%	56.8%	56.3%	56.3%	56.9%	56.9%
8 Croydon	56.2%	54.4%	53.9%	53.8%	53.7%	55.1%	56.0%
9 Barnet	55.9%	55.6%	54.9%	55.2%	55.7%	56.7%	55.8%
10 Enfield	56.5%	56.7%	56.8%	57.6%	57.0%	57.1%	55.7%
11 Merton	54.1%	52.6%	52.6%	52.7%	51.8%	53.4%	54.4%
12 Redbridge	56.8%	56.4%	56.4%	56.0%	55.8%	54.4%	54.3%
13 Greenwich	50.2%	50.4%	51.0%	50.7%	50.7%	51.5%	50.8%
14 Hillingdon	51.9%	51.7%	51.5%	49.9%	49.9%	50.6%	50.5%
15 City of London	44.0%	44.3%	45.6%	46.4%	46.8%	49.2%	50.1%
16 Waltham Forest	52.9%	52.6%	52.1%	52.0%	52.3%	51.8%	49.5%
17 Southwark	49.2%	49.6%	49.5%	49.2%	50.2%	49.3%	49.4%
18 Lewisham	47.8%	47.4%	47.2%	47.7%	49.2%	49.7%	49.3%
19 Haringey	47.2%	48.0%	47.8%	47.9%	47.6%	48.9%	48.9%
20 Brent	47.8%	47.9%	49.1%	49.9%	48.5%	48.5%	48.6%
21 Wandsworth	51.7%	49.7%	48.4%	48.6%	47.2%	47.9%	48.1%
22 Hounslow	49.1%	48.8%	48.5%	48.2%	48.4%	47.8%	47.2%
23 Ealing	48.0%	48.9%	47.8%	42.7%	43.7%	46.0%	46.0%
24 Lambeth	45.9%	45.0%	44.2%	45.2%	45.7%	47.5%	45.2%
25 Camden	41.2%	42.4%	42.2%	42.4%	43.5%	45.1%	44.6%
26 Hackney	43.2%	43.7%	43.3%	43.4%	43.5%	44.7%	44.2%
27 Barking and Dagenham	54.2%	52.8%	51.3%	50.5%	49.0%	40.0%	44.1%
28 Islington	44.8%	44.7%	43.8%	45.9%	47.7%	45.0%	44.1%
29 Newham	45.7%	46.5%	46.0%	43.3%	42.9%	43.3%	43.1%
30 Hammersmith and Fulham	42.2%	41.0%	39.4%	41.6%	40.8%	41.1%	42.2%
31 Tower Hamlets	42.8%	42.0%	41.2%	39.1%	38.2%	39.2%	39.0%
32 Westminster	33.4%	34.0%	33.2%	33.1%	34.5%	33.5%	33.2%
33 Kensington and Chelsea	31.0%	30.1%	28.6%	27.1%	26.1%	28.0%	28.9%

Definition of uptake: Uptake is the percentage of women invited for screening in the year, who were screened adequately within six months of invitation. Refers only to women who have received a routine invite to screening

Definition of coverage: Coverage is defined as the percentage of women in the population who are eligible for screening at a particular point in time, who have had a test with a recorded result within the last three years. The latest data published indicates in London, only 52% of eligible women had a recorded test result with the last three years

Breast Screening coverage at London Borough level



TLTA	Nov-21	Dec-21	Jan-22	Feb-22	Mar-22	Apr-22	May-22	Jun-22
1 Havering	74.4%	74.5%	74.0%	73.6%	73.3%	72.8%	72.0%	71.2%
2 Bromley	63.3%	62.9%	62.6%	62.9%	63.4%	63.2%	63.6%	64.5%
3 Sutton	58.8%	59.8%	60.6%	59.5%	61.3%	61.5%	61.9%	62.5%
4 Kingston upon Thames	59.3%	60.1%	60.5%	60.7%	61.8%	62.4%	62.6%	62.3%
5 Richmond upon Thames	59.2%	60.1%	59.4%	58.1%	58.5%	60.4%	61.2%	61.8%
6 Bexley	66.4%	65.5%	62.8%	60.9%	59.4%	59.1%	60.6%	61.2%
7 Enfield	58.0%	58.3%	57.9%	58.3%	59.5%	60.1%	60.7%	61.0%
8 Harrow	63.5%	64.5%	64.8%	64.0%	63.1%	61.5%	61.0%	60.9%
9 Barnet	61.9%	61.9%	61.7%	61.7%	61.9%	61.3%	61.1%	60.4%
10 Waltham Forest	61.1%	60.9%	60.7%	60.4%	60.3%	60.0%	60.0%	59.8%
11 Croydon	56.7%	56.5%	56.6%	57.0%	57.8%	58.6%	59.3%	59.7%
12 Barking and Dagenham	60.2%	60.2%	60.1%	60.1%	59.9%	59.8%	59.7%	59.4%
13 Redbridge	58.5%	58.3%	58.0%	57.9%	58.8%	58.6%	58.3%	58.1%
14 Merton	57.3%	56.5%	55.8%	55.9%	56.8%	57.2%	57.9%	57.4%
15 Brent	52.4%	53.0%	53.5%	54.2%	55.2%	55.6%	55.5%	55.2%
16 Haringey	51.2%	53.5%	55.2%	55.2%	54.3%	54.5%	54.9%	54.9%
17 Greenwich	47.8%	50.4%	53.8%	55.5%	56.2%	56.4%	55.1%	54.3%
18 Hillingdon	52.8%	54.0%	53.6%	53.5%	53.9%	54.1%	54.1%	53.9%
19 Lewisham	54.9%	56.2%	56.7%	55.5%	54.5%	53.8%	53.5%	53.6%
20 Islington	52.2%	52.6%	52.7%	52.6%	52.4%	52.4%	52.4%	52.0%
21 Newham	54.4%	54.1%	53.8%	53.3%	53.0%	52.6%	52.1%	51.8%
22 Tower Hamlets	52.4%	52.2%	52.2%	52.2%	52.2%	52.1%	52.1%	51.6%
23 Wandsworth	48.0%	48.1%	48.7%	48.2%	49.1%	49.4%	50.5%	51.5%
24 Lambeth	51.4%	50.8%	49.3%	49.6%	49.9%	50.8%	50.6%	50.6%
25 Hounslow	53.6%	54.0%	53.4%	53.1%	52.9%	52.2%	51.5%	50.6%
26 Hackney	57.2%	57.0%	56.7%	55.9%	55.0%	53.4%	51.5%	50.1%
27 Ealing	49.1%	50.0%	49.5%	49.2%	49.5%	49.5%	50.5%	49.9%
28 City of London	58.3%	58.3%	58.9%	58.8%	52.1%	51.6%	49.9%	49.6%
29 Southwark	45.8%	46.2%	47.3%	46.7%	47.0%	47.2%	48.8%	49.1%
30 Camden	47.2%	48.0%	47.4%	47.0%	46.9%	46.4%	45.7%	44.7%
31 Hammersmith and Fulham	42.2%	42.5%	41.3%	40.7%	40.9%	41.5%	41.6%	42.7%
32 Westminster	41.9%	42.1%	41.8%	41.2%	41.1%	41.4%	40.8%	40.2%
33 Kensington and Chelsea	42.6%	42.3%	41.7%	41.8%	41.4%	40.1%	39.4%	39.5%

Definition of uptake: Uptake is the percentage of women invited for screening in the year, who were screened adequately within six months of invitation. Refers only to women who have received a routine invite to screening

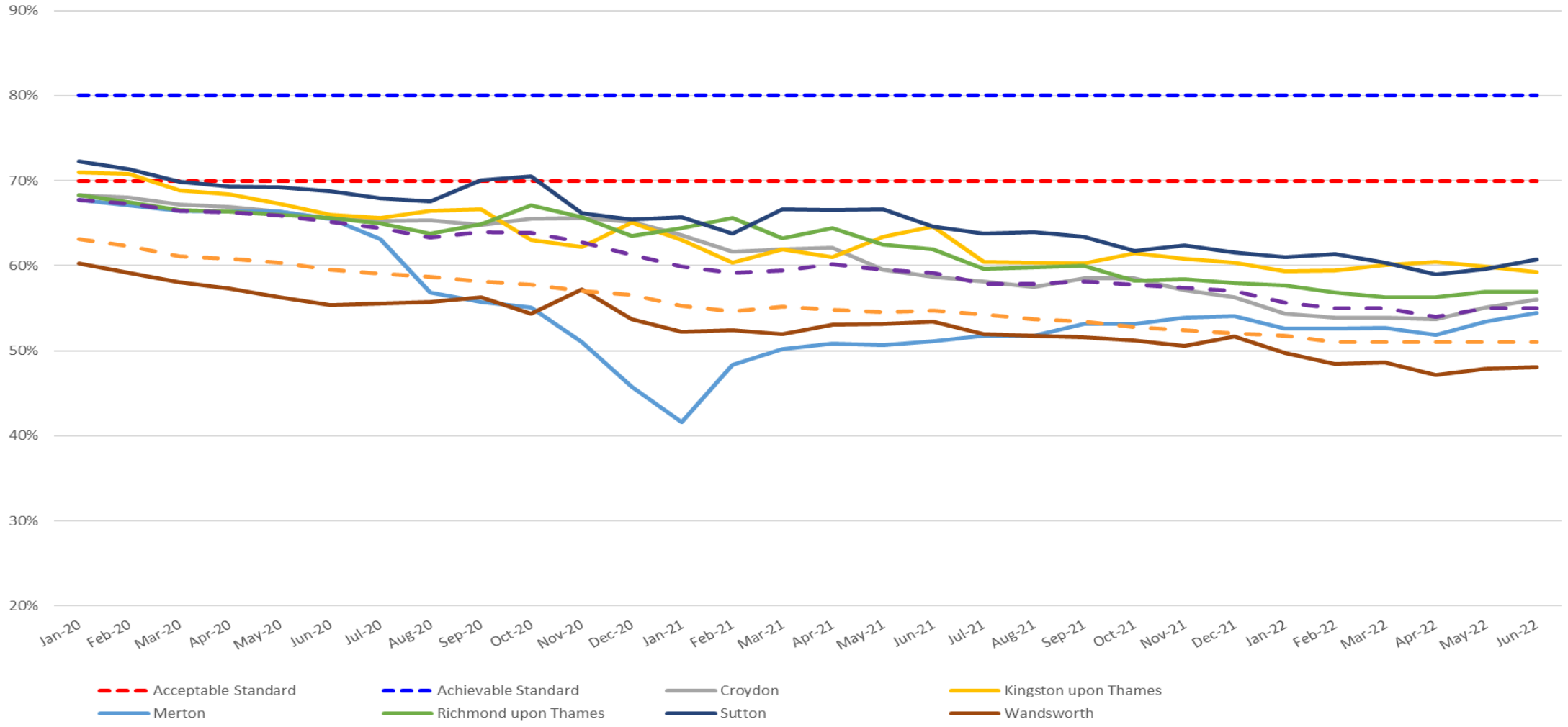
Definition of coverage: Coverage is defined as the percentage of women in the population who are eligible for screening at a particular point in time, who have had a test with a recorded result within the last three years. The latest data published indicates in London, only 51% of eligible women had a recorded test result with the last three years

Breast Screening Uptake by Borough in SWL

Source: NHS Futures

SWL Breast Screening Uptake (53 -70) by Borough

Page 29

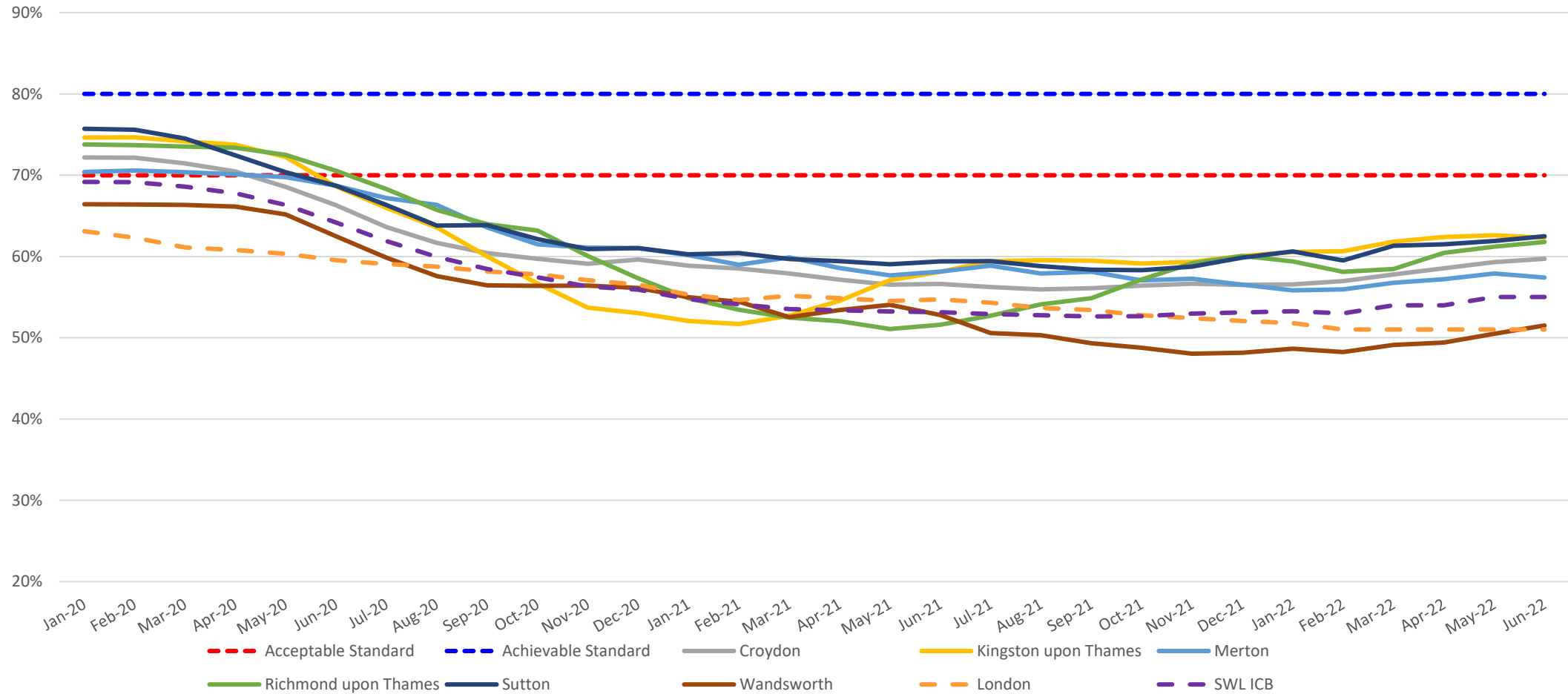


Breast Screening Coverage by Borough in SWL

Source: NHS Futures

SWL Breast Screening Coverage (53-70) by Borough

Page 31



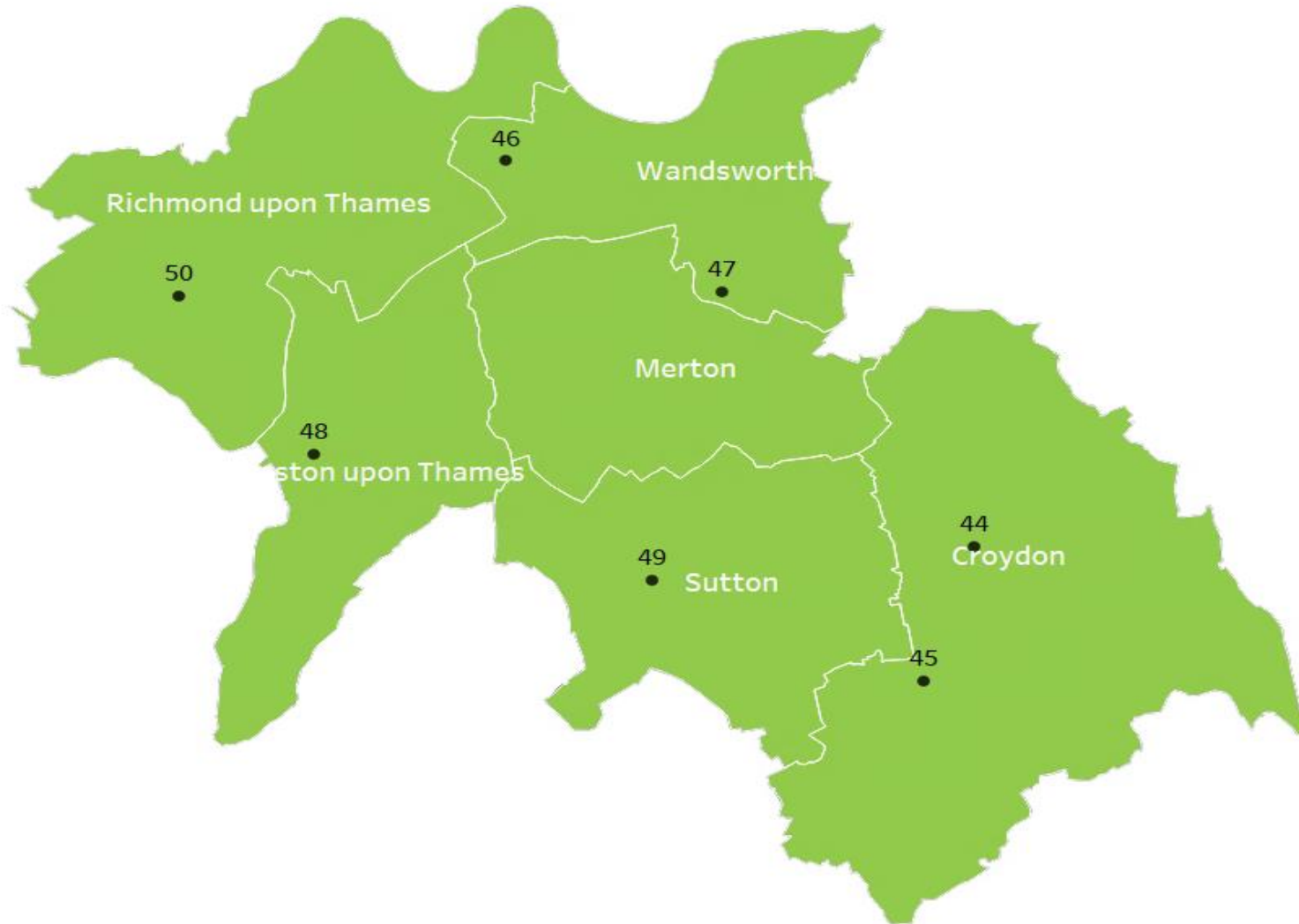
Breast Screening Coverage by Borough in SWL

Source: NHS Futures



Borough	Jan-20	Feb-20	Mar-20	Apr-20	May-20	Jun-20	Jul-20	Aug-20	Sep-20	Oct-20	Nov-20	Dec-20	Jan-21	Feb-21	Mar-21	Apr-21	May-21	Jun-21	Jul-21	Aug-21	Sep-21	Oct-21	Nov-21	Dec-21	Jan-22	Feb-22	Mar-22	Apr-22	May-22	Jun-22	Change since Jan 20	
Croydon	72%	72%	71%	70%	69%	66%	64%	62%	60%	60%	59%	60%	59%	59%	58%	57%	57%	57%	56%	56%	56%	56%	57%	56%	57%	57%	58%	59%	59%	60%	12%	
Kingston upon Thames	75%	75%	74%	74%	72%	69%	66%	64%	60%	57%	54%	53%	52%	52%	53%	55%	57%	58%	59%	60%	59%	59%	59%	60%	61%	61%	62%	62%	63%	62%	12%	
Merton	70%	71%	70%	70%	70%	69%	67%	66%	64%	61%	61%	61%	60%	59%	60%	59%	58%	58%	59%	58%	58%	57%	57%	57%	56%	56%	57%	57%	58%	57%	13%	
Richmond upon Thames	74%	74%	74%	73%	73%	71%	68%	66%	64%	63%	60%	57%	55%	53%	52%	52%	51%	52%	53%	54%	55%	57%	59%	60%	59%	58%	58%	60%	61%	62%	12%	
Sutton	76%	76%	75%	72%	70%	69%	66%	64%	64%	62%	61%	61%	60%	60%	60%	59%	59%	59%	59%	59%	58%	58%	59%	60%	61%	60%	61%	61%	62%	63%	13%	
Wandsworth	66%	66%	66%	66%	65%	62%	60%	58%	56%	56%	56%	56%	55%	54%	53%	53%	54%	53%	51%	50%	49%	49%	48%	48%	49%	48%	49%	49%	51%	52%	15%	
SWL ICB	69%	69%	69%	68%	66%	64%	62%	60%	58%	57%	56%	56%	55%	54%	54%	53%	53%	53%	53%	53%	53%	53%	53%	53%	53%	53%	53%	54%	54%	55%	55%	14%
London	63%	62%	61%	61%	60%	60%	59%	59%	58%	58%	57%	57%	55%	55%	55%	55%	55%	55%	55%	54%	54%	53%	53%	52%	52%	52%	51%	51%	51%	51%	12%	

SWL Breast Screening Sites



Key	
No.	Breast Screening Site
44	Edridge Road Community Health Centre
45	Purley War Memorial Hospital
46	Queen Mary Hospital Roehampton - Wheelchair Access
47	Rose Centre, St Georges Hospital - Wheelchair Access
48	Surbiton Health Centre - Wheelchair Access
49	Sutton, Robin Hood Lane Health Centre
50	Teddington Memorial - Wheelchair Access

SWL: Breast Screening uptake interventions at London and ICB level

NHS England – London Region

- Implementing London Breast Screening Health Promotion model
- Workforce Development Support for staff working within health promotion across the London system
- London-wide Breast Screening Social Marketing Campaign targeted at first time invitees and women residing in low uptake areas
- Primary Care Engagement

ICB - RM Partners (Cancer Alliance)

- Public Health Collaboration
- Posters and leaflets in warm banks
- Screening Improvement Facilitators
- Working with BAME groups in Croydon to promote screening and symptom awareness within black and south Asian communities

SWL - Breast Screening Service

- See slides 9-11